



FLOORPLANS

VISTA CAY
at SHELL POINT 

INTRODUCING VISTA CAY



An UNPARALLELED FUTURE is in VIEW



The Island neighborhood is the first chapter in the Shell Point story.

Since 1968, The Island has provided its residents with a waterfront paradise on the banks of the Caloosahatchee River. Over the years, Shell Point expanded beyond The Island to include six additional neighborhoods, each providing multiple residential options and resort-style amenities. Expansion has always been a part of Shell Point's history.

Now, for the first time in decades, Shell Point is returning to The Island with the construction of a new midrise residential building. With the unparalleled setting, lifestyle, and lifecare for which Shell Point is known, comes an opportunity for new waterfront residences in VISTA CAY.

VISTA CAY's 12 residential floors over two floors of parking will offer 59 residences, all with sunrise or sunset coastal views. There are 15 different floorplans from which to choose, including lofts with high ceilings and large balconies, midrise residences with stunning finishes, and penthouse residences with panoramic views.

Additionally, Shell Point is redeveloping The Island's amenities with the construction of an all new 100,000-square-foot Island Commons. Adjacent to VISTA CAY, Island Commons will be a welcoming space for Shell Point residents to dine and enjoy an array of activities with their neighbors.

With the wide variety of residences and amenities at Shell Point, there's truly something for everyone.

Come experience VISTA CAY, where an unparalleled future is in view!

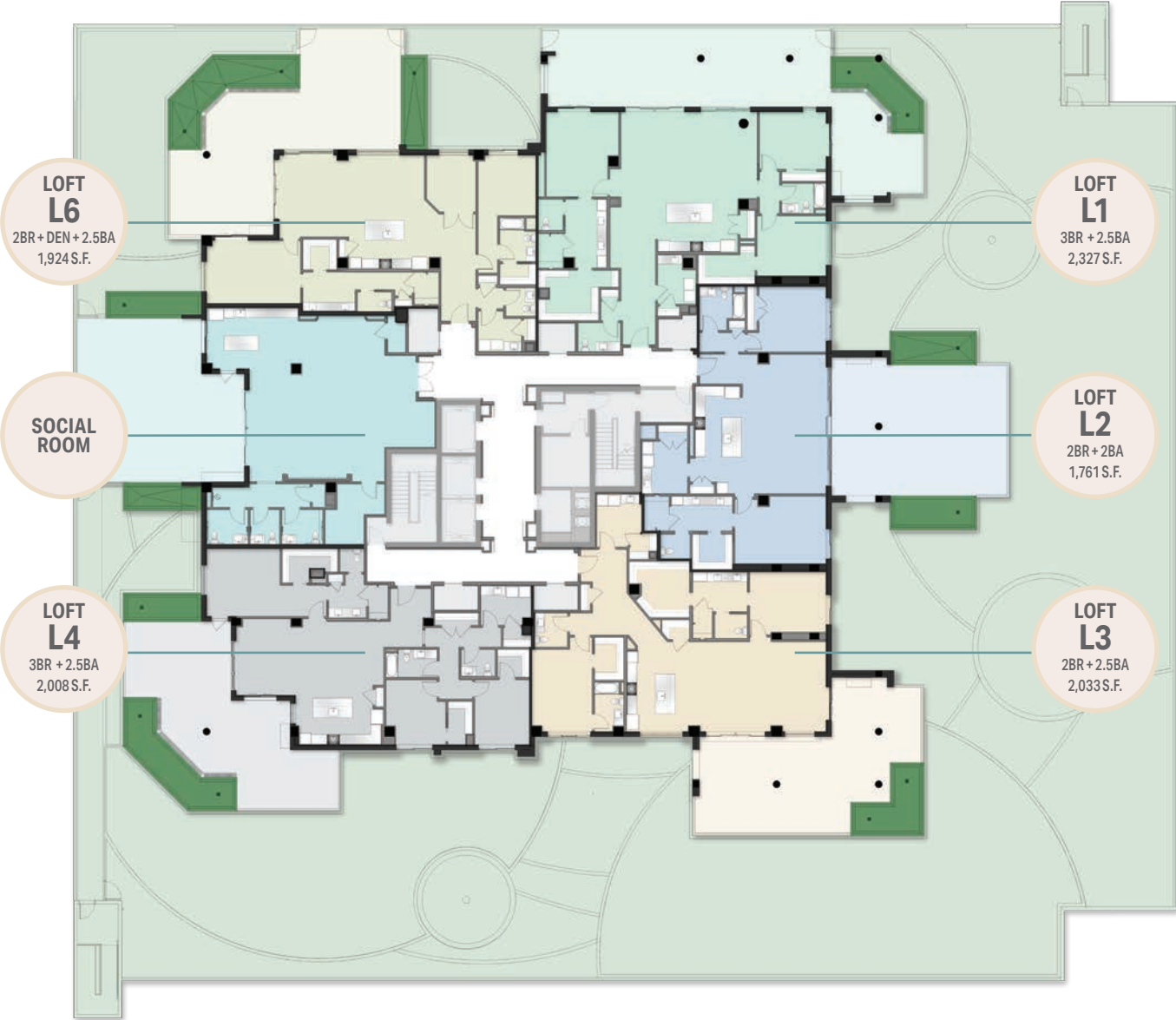








Floor 1 LOFTS & Social Room at Vista Cay



LOFT L6
2BR + DEN + 2.5BA
1,924 S.F.

LOFT L1
3BR + 2.5BA
2,327 S.F.

SOCIAL ROOM

LOFT L2
2BR + 2BA
1,761 S.F.

LOFT L4
3BR + 2.5BA
2,008 S.F.

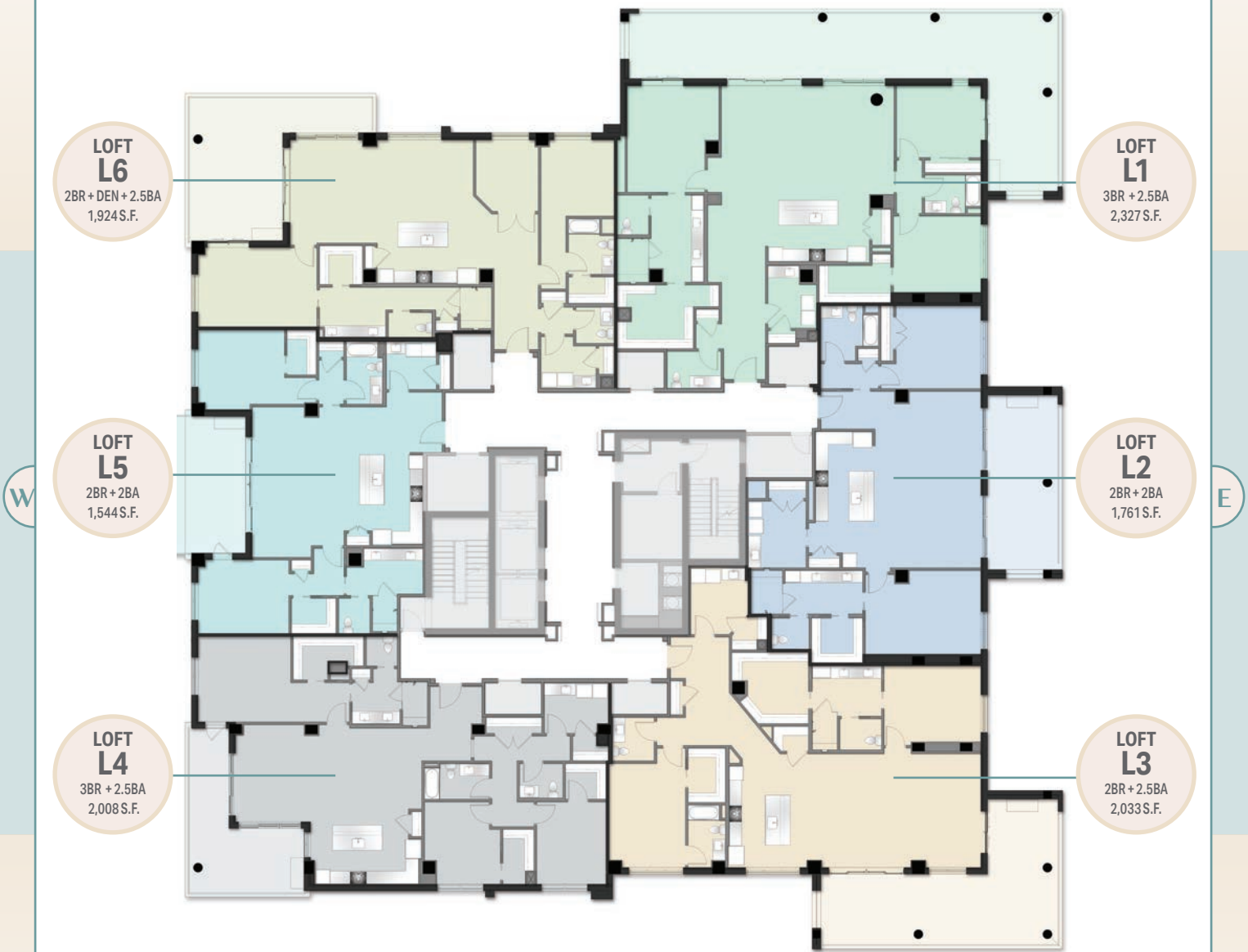
LOFT L3
2BR + 2.5BA
2,033 S.F.

Situated directly above two floors of parking, the first residential floor at Vista Cay offers five Loft residences with spacious terraces and floorplans ranging from 1,761 to 2,327 square feet under air.





Floor 2 LOFTS at Vista Cay



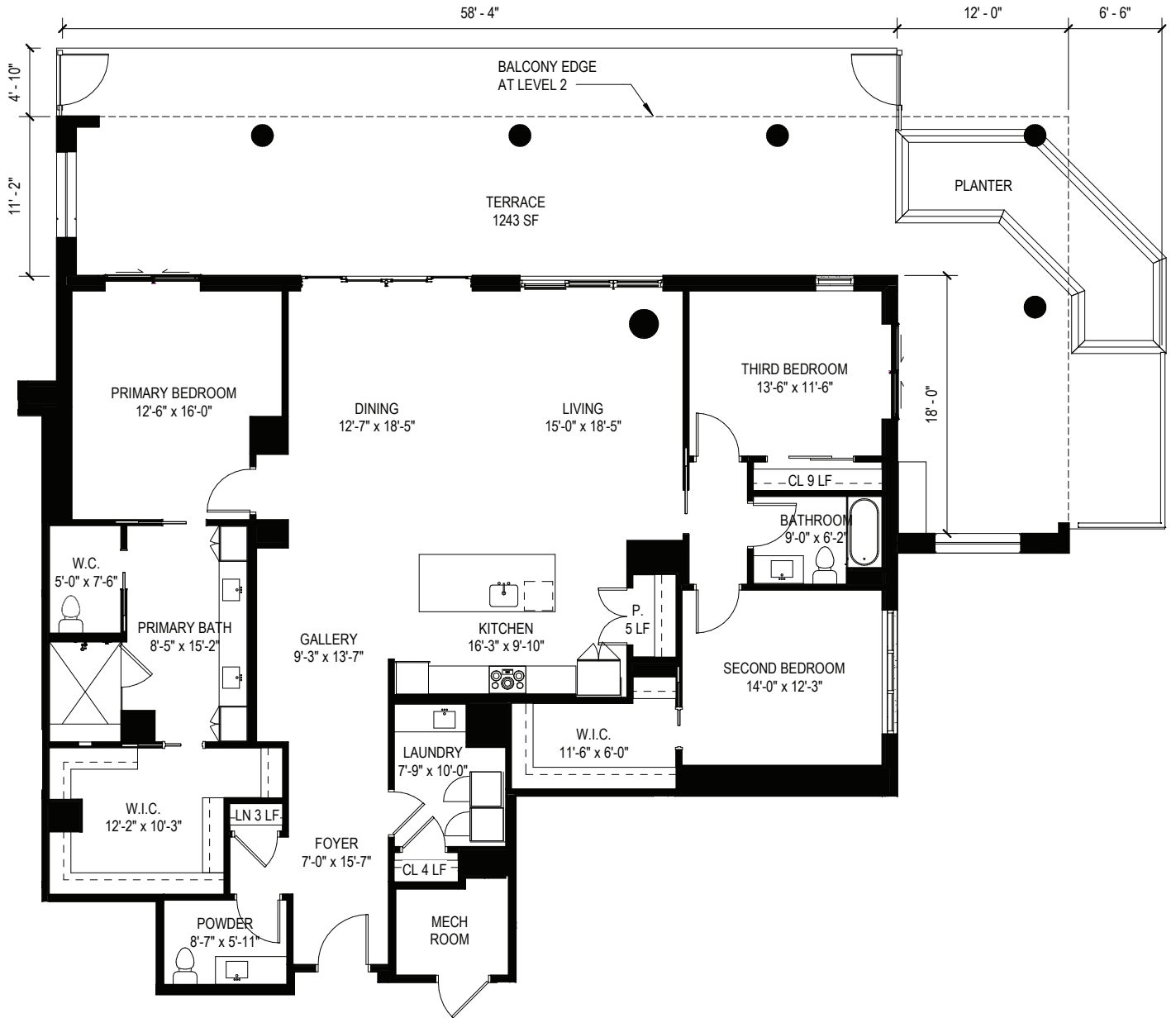
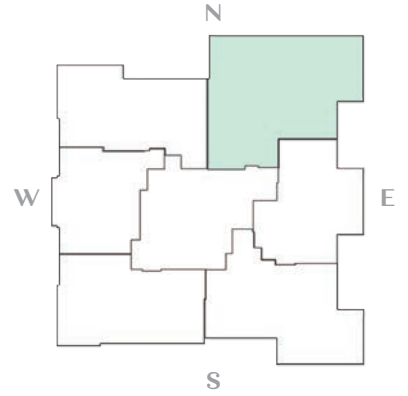
Six additional floor 2 Loft residences have generous balconies with floorplans ranging from 1,544 to 2,327 square feet under air.



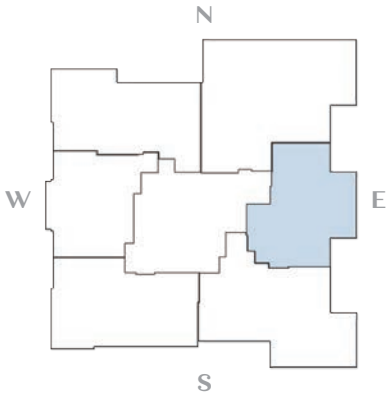
FLOORPLAN

L1

Available on Floors 1 & 2



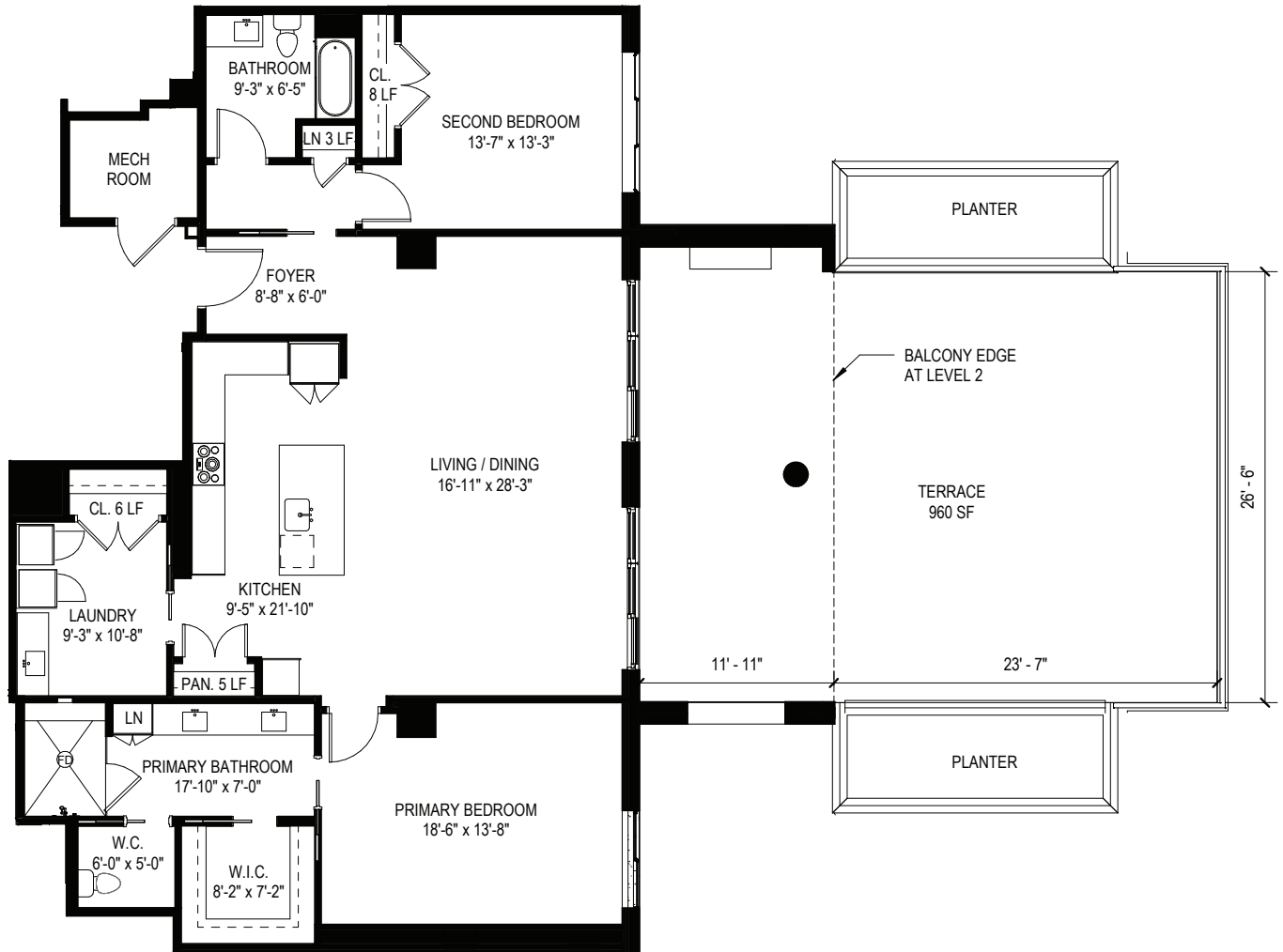
LOFT | 3BR + 2.5BA | 2,327 S.F. *under air*



FLOORPLAN

L2

Available on Floors 1 & 2

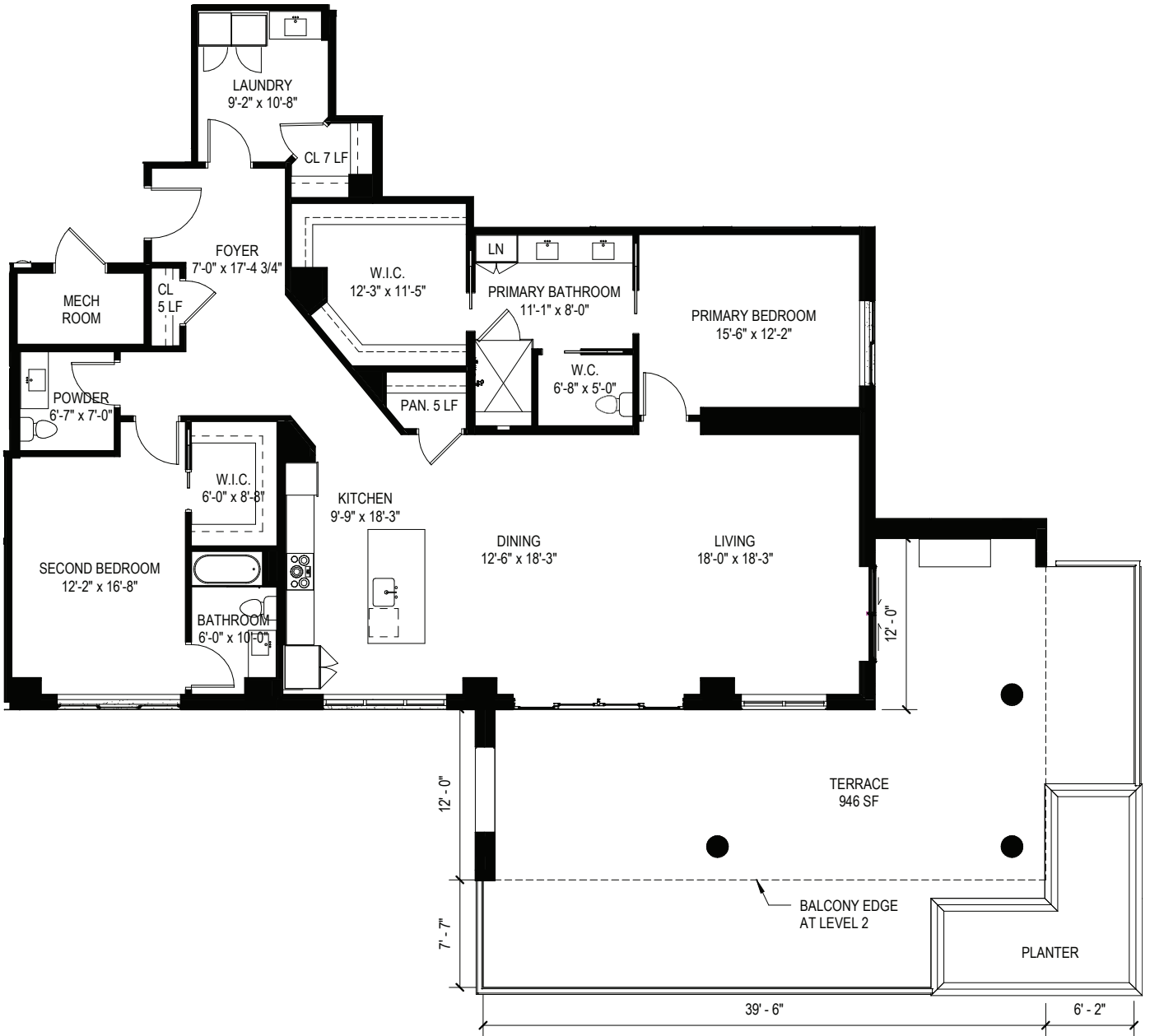
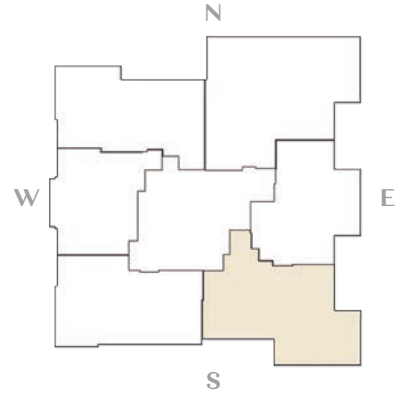


LOFT | 2BR + 2BA | 1,761 S.F. *under air*

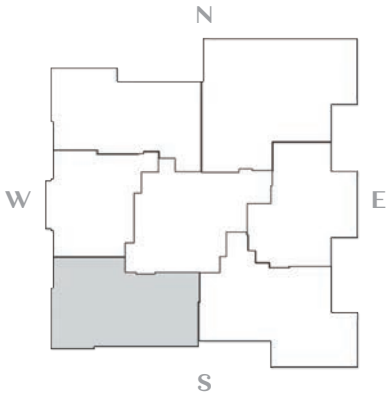
FLOORPLAN

L3

Available on Floors 1 & 2



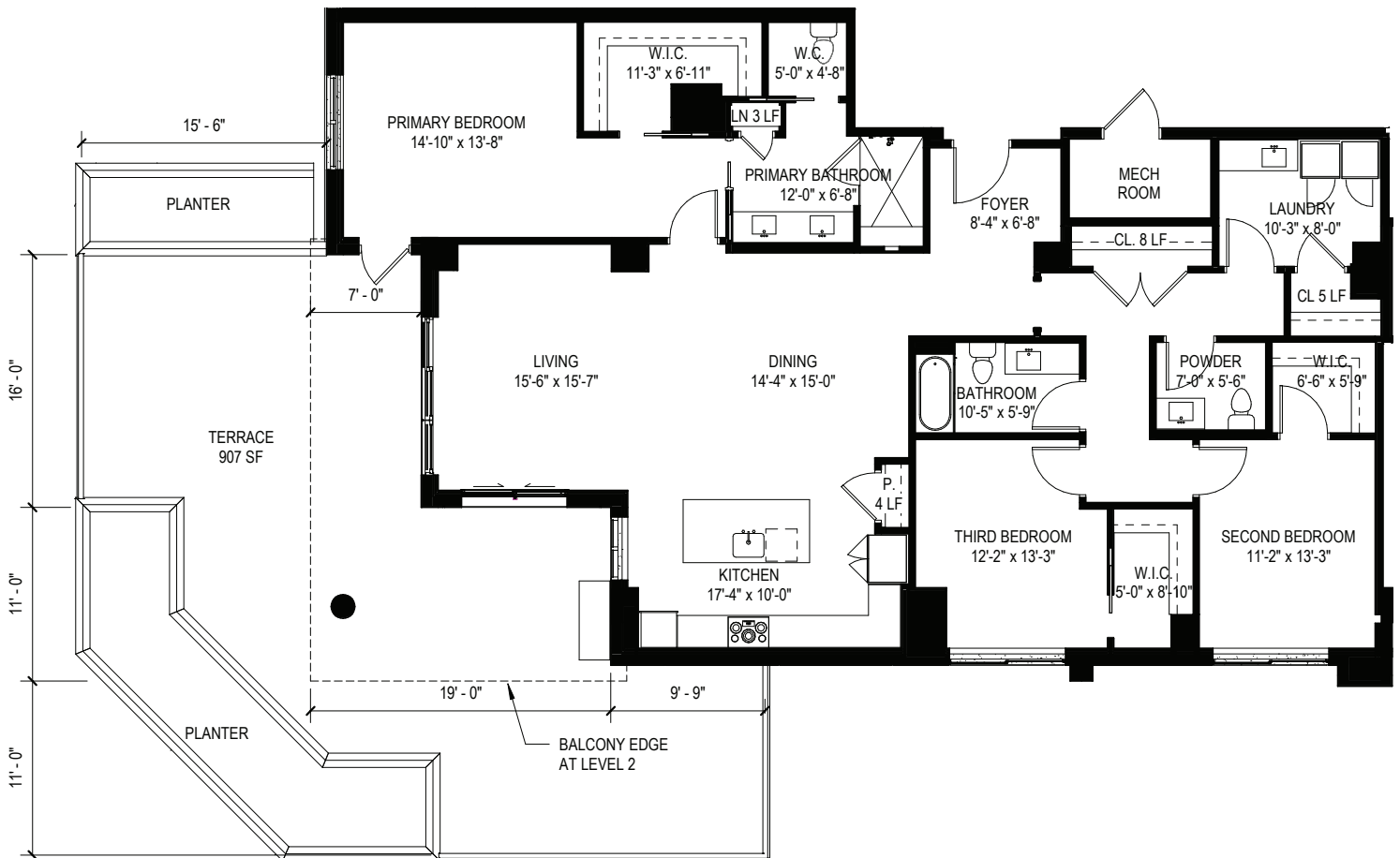
LOFT | 2BR + 2.5BA | 2,033 S.F. *under air*



FLOORPLAN

L4

Available on Floors 1 & 2

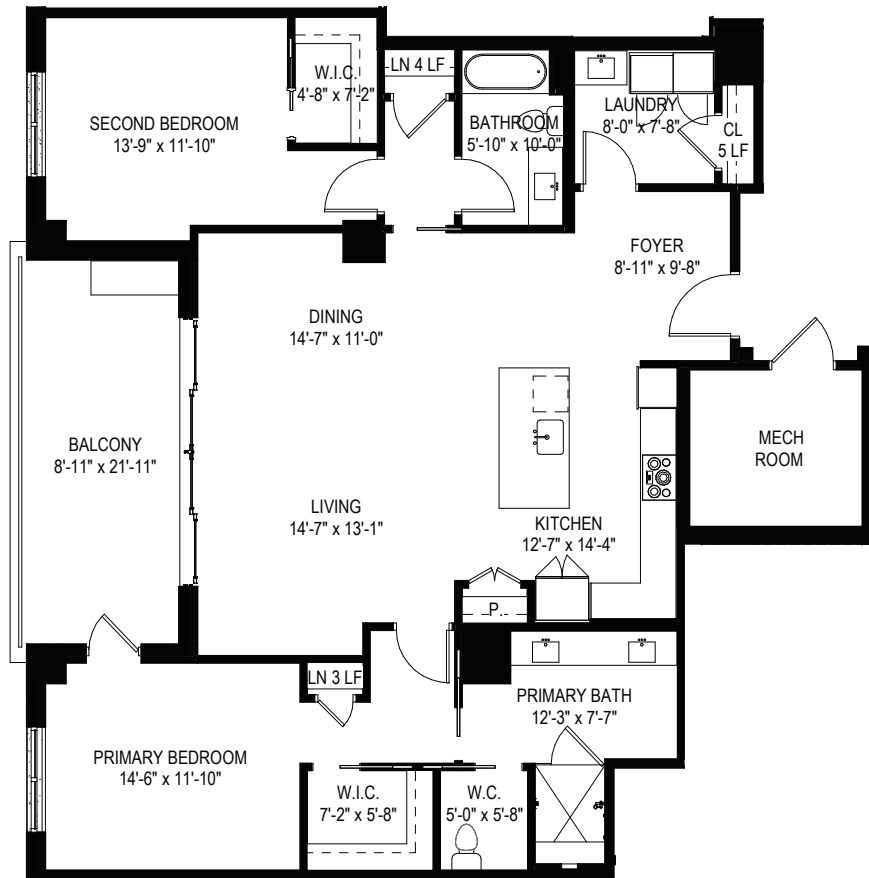
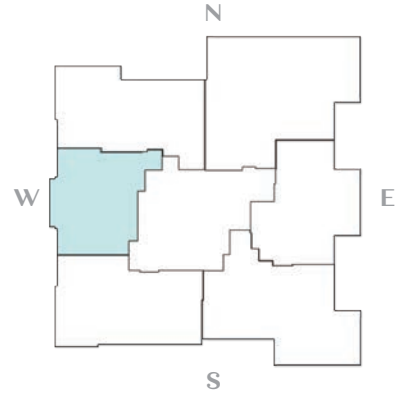


LOFT | 3BR + 2.5BA | 2,008 S.F. *under air*

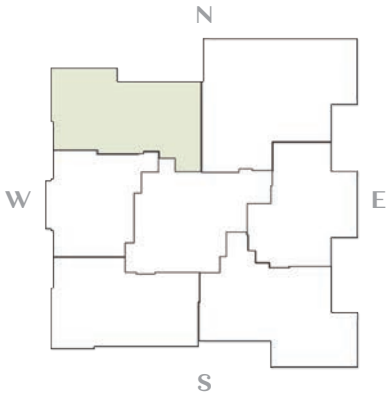
FLOORPLAN

L5

Available on Floor 2 Only



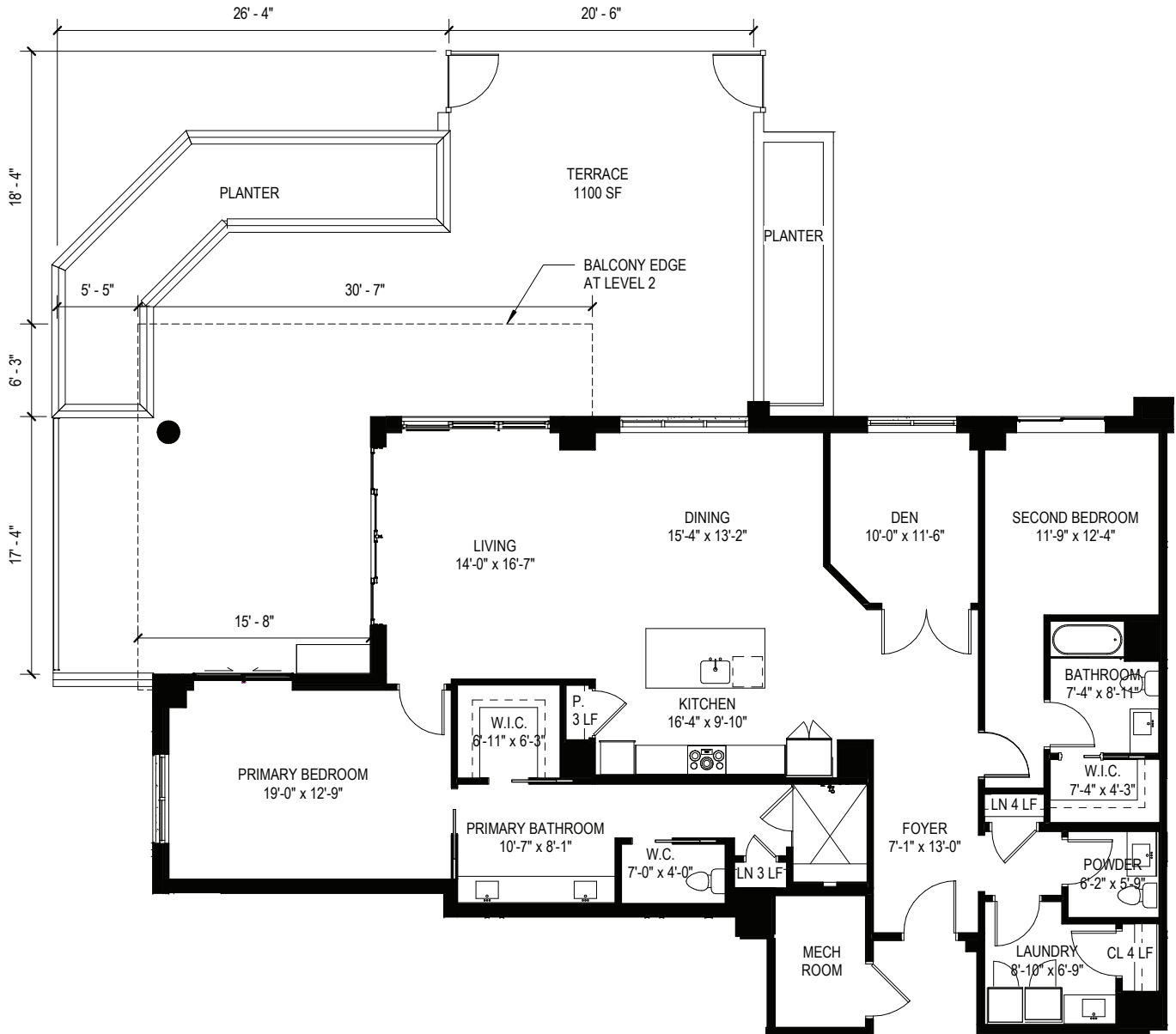
LOFT | 2BR + 2BA | 1,544 S.F. *under air*



FLOORPLAN

L6

Available on Floors 1 & 2



LOFT | 2BR + DEN + 2.5BA | 1,924 S.F. under air





Floors 3-10 MIDRISES at Vista Cay



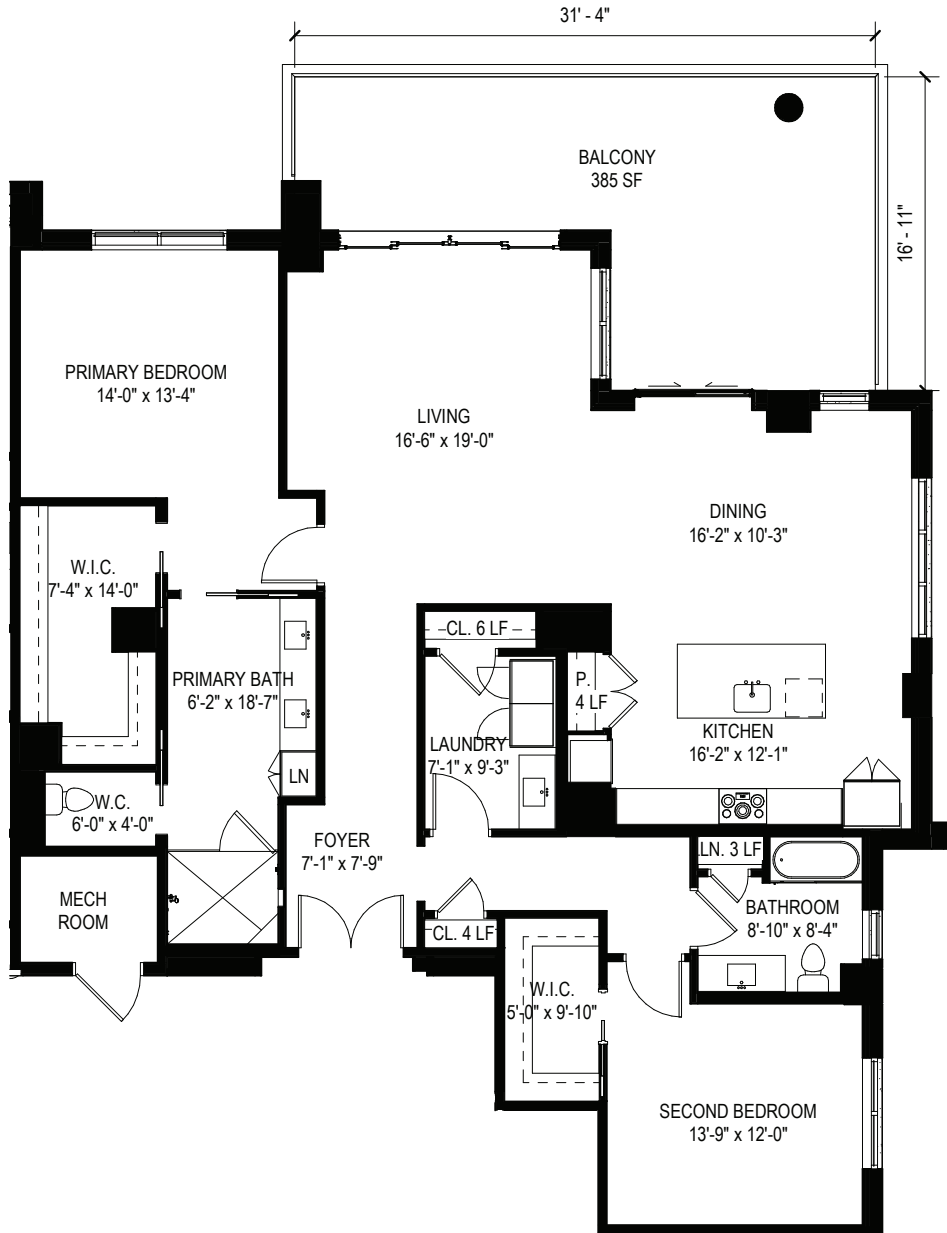
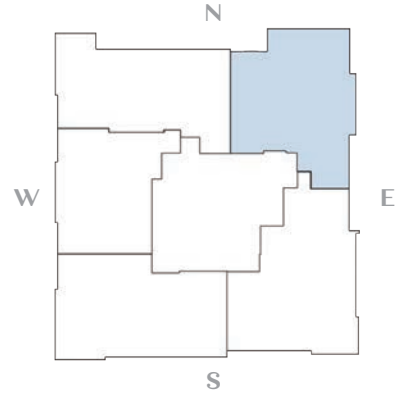
Middle floors have identical layouts, with five different Midrise floorplans ranging from 1,582 to 2,235 square feet under air.



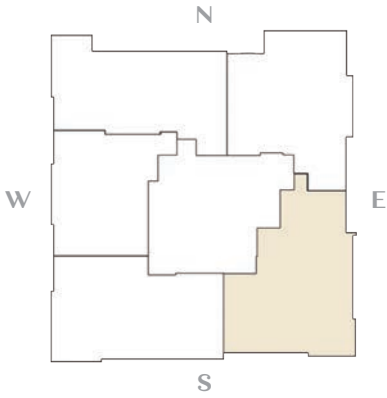
FLOORPLAN

M1

Available on Floors 3-10



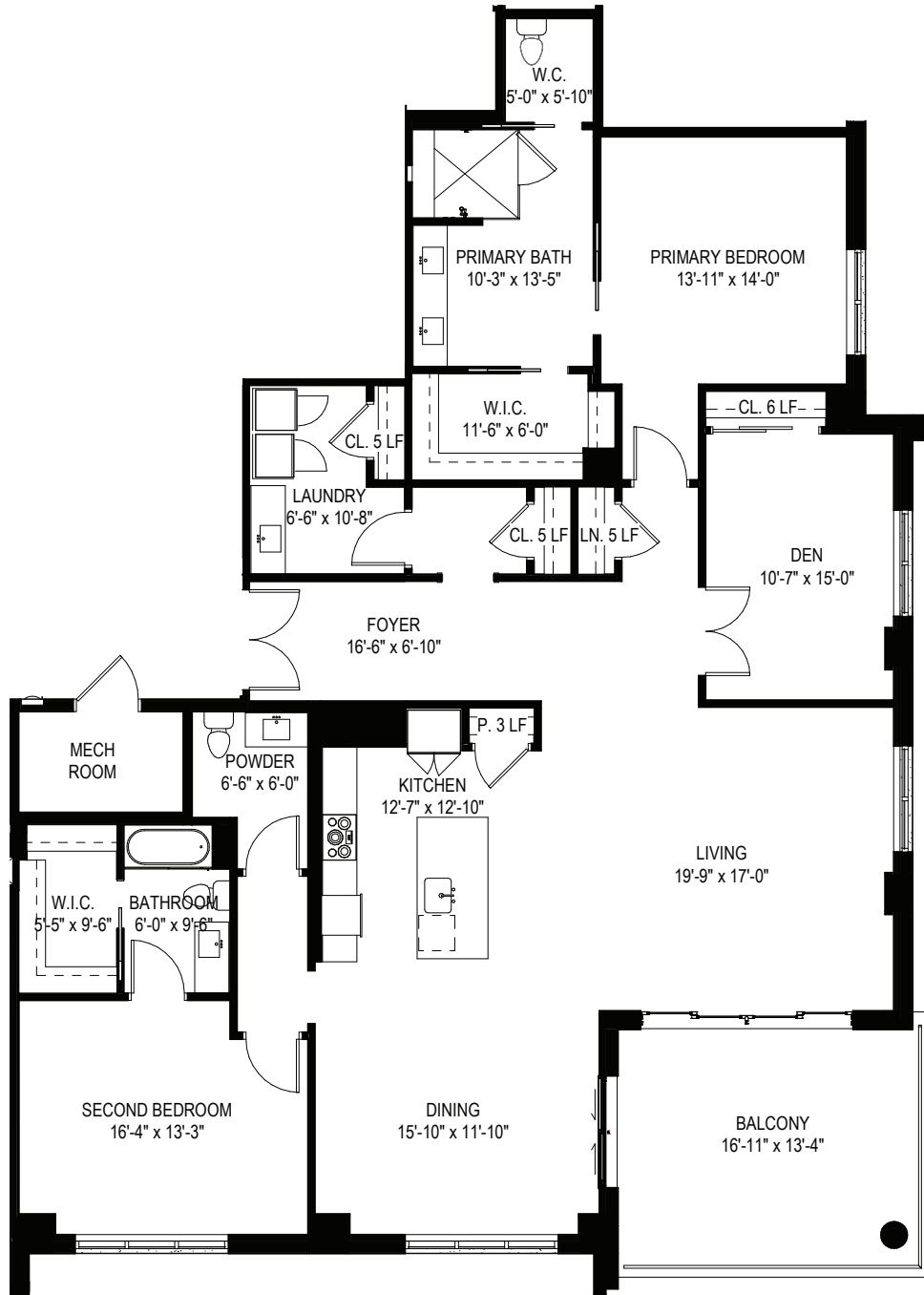
MIDRISE | 2BR + 2BA | 1,855 S.F. *under air*



FLOORPLAN

M2

Available on Floors 3-10

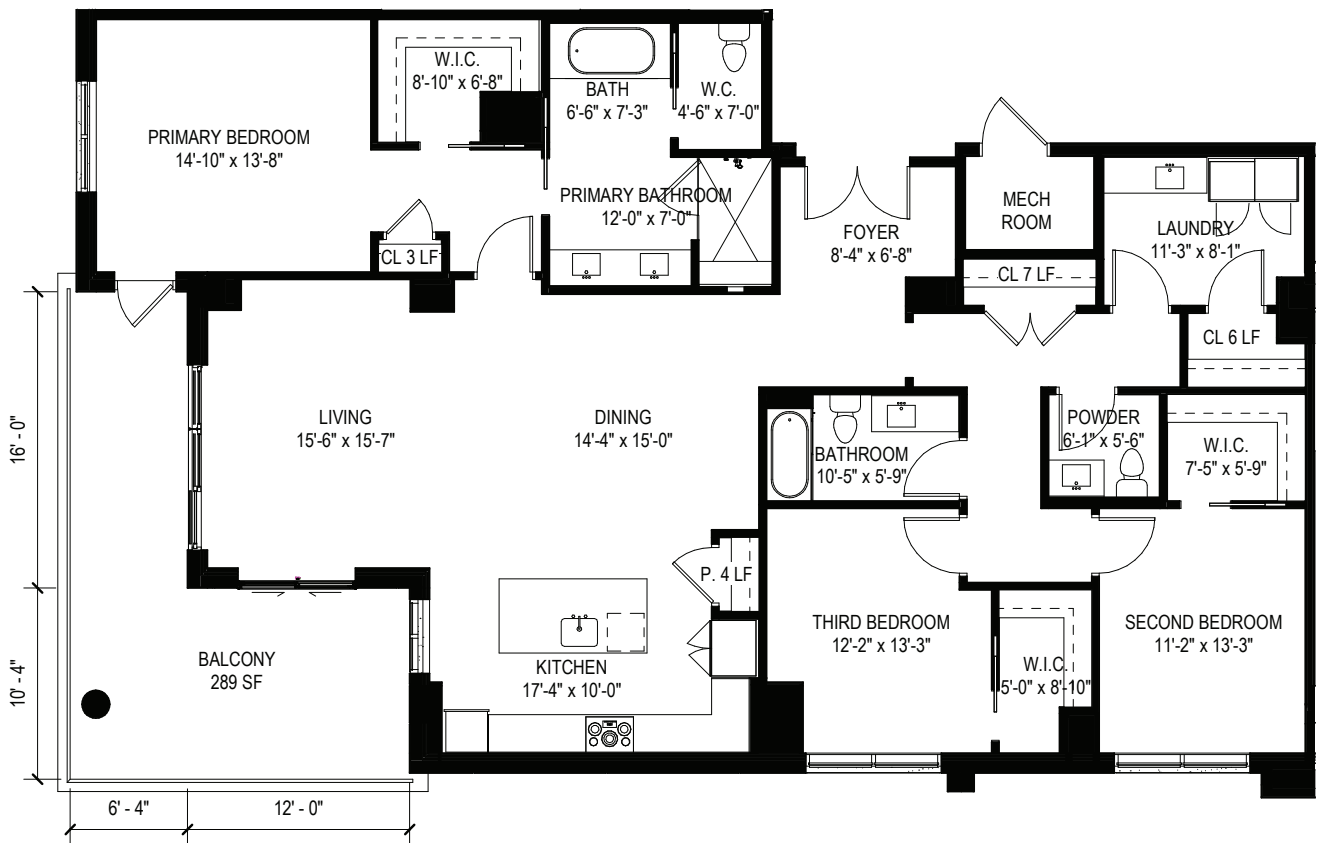
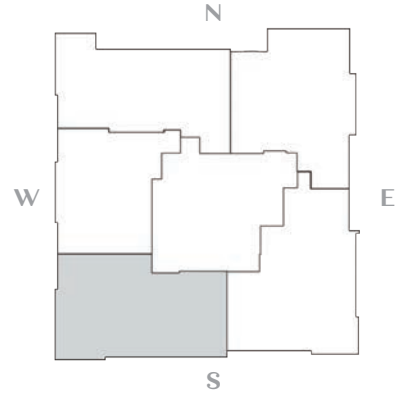


MIDRISE | 2BR + DEN + 2.5BA | 2,235 S.F. *under air*

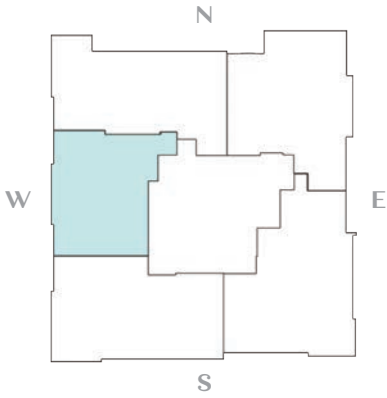
FLOORPLAN

M3

Available on Floors 3-10



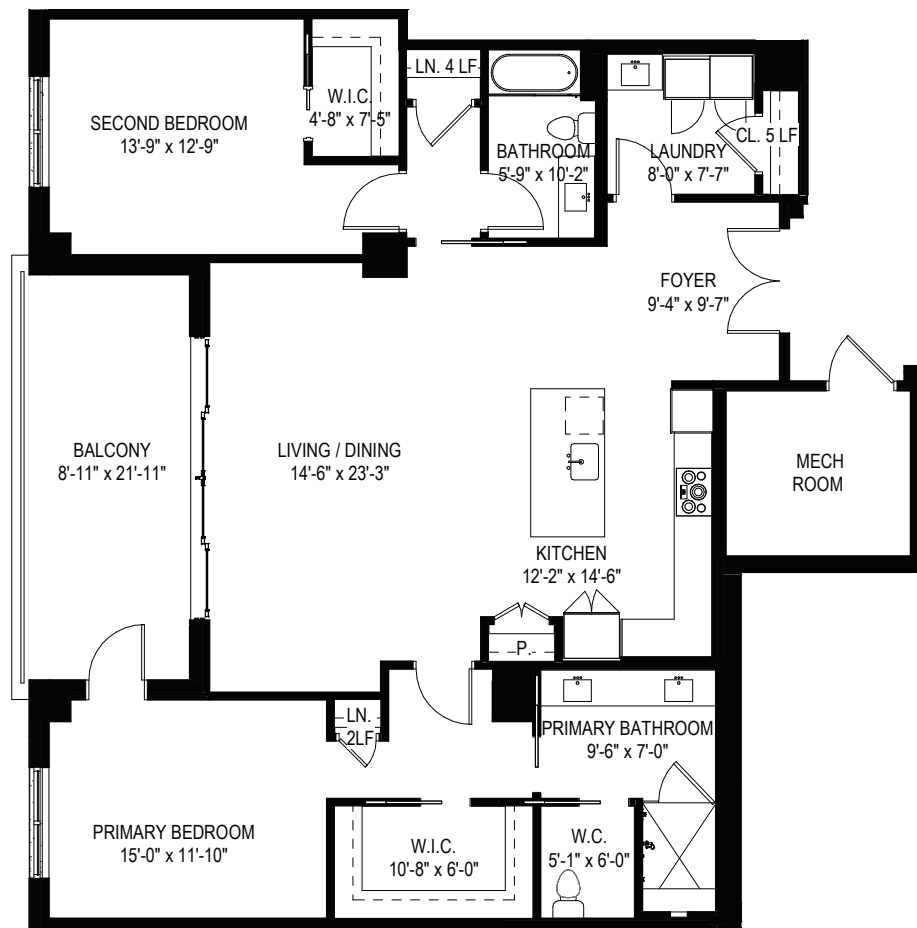
MIDRISE | 3BR + 2.5BA | 2,038 S.F. *under air*



FLOORPLAN

M4

Available on Floors 3-10

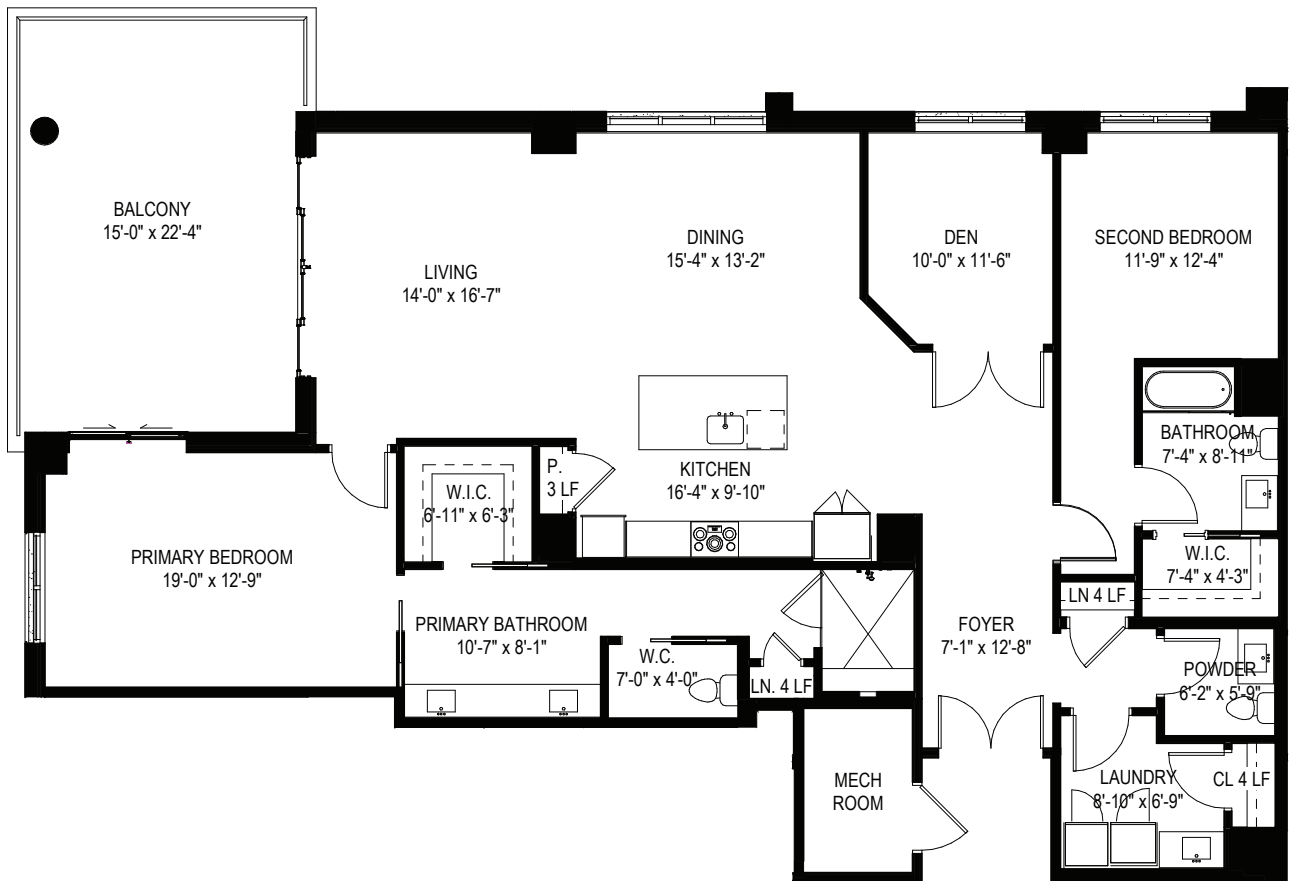
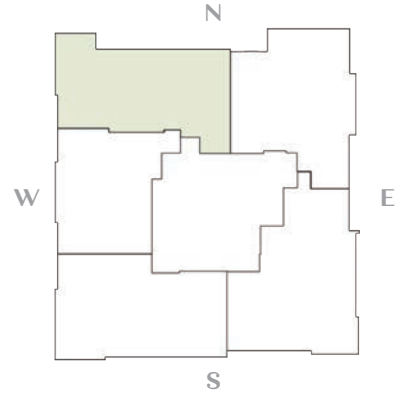


MIDRISE | 2BR + 2BA | 1,582 S.F. *under air*

FLOORPLAN

M5

Available on Floors 3-10



MIDRISE | 2BR + DEN + 2.5BA | 1,921 S.F. *under air*







Floors 11 & 12 PENTHOUSES at Vista Cay



PENT P4
3BR + 3.5BA
2,722 S.F.

PENT P1
2BR + DEN + 2.5BA
2,311 S.F.

PENT P3
3BR + DEN + 2.5BA
2,462 S.F.

PENT P2
2BR + DEN + 2.5BA
2,237 S.F.

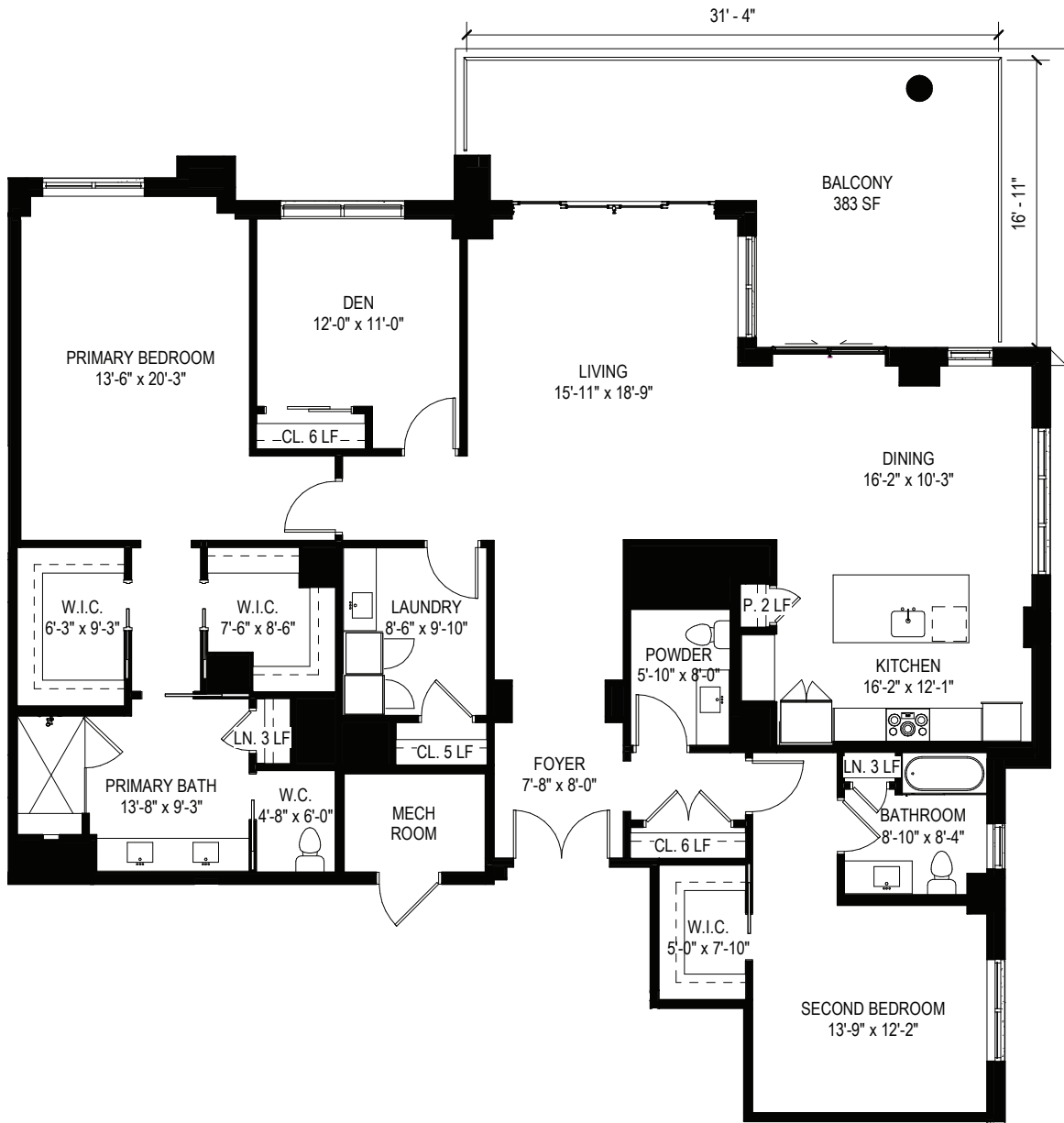
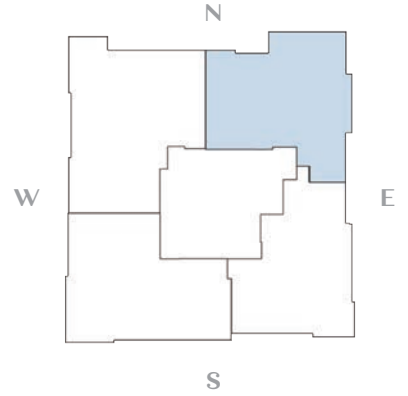
Two Penthouse floors feature panoramic views and the four most expansive floorplans at Vista Cay, ranging from 2,237 to 2,722 square feet under air.



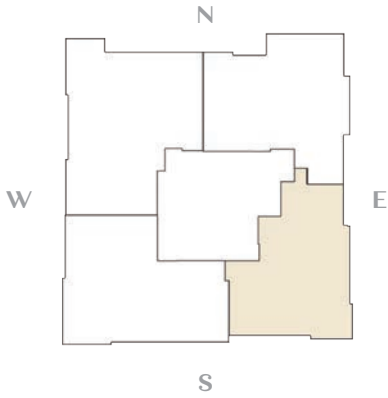
FLOORPLAN

P1

Available on Floors 11 & 12



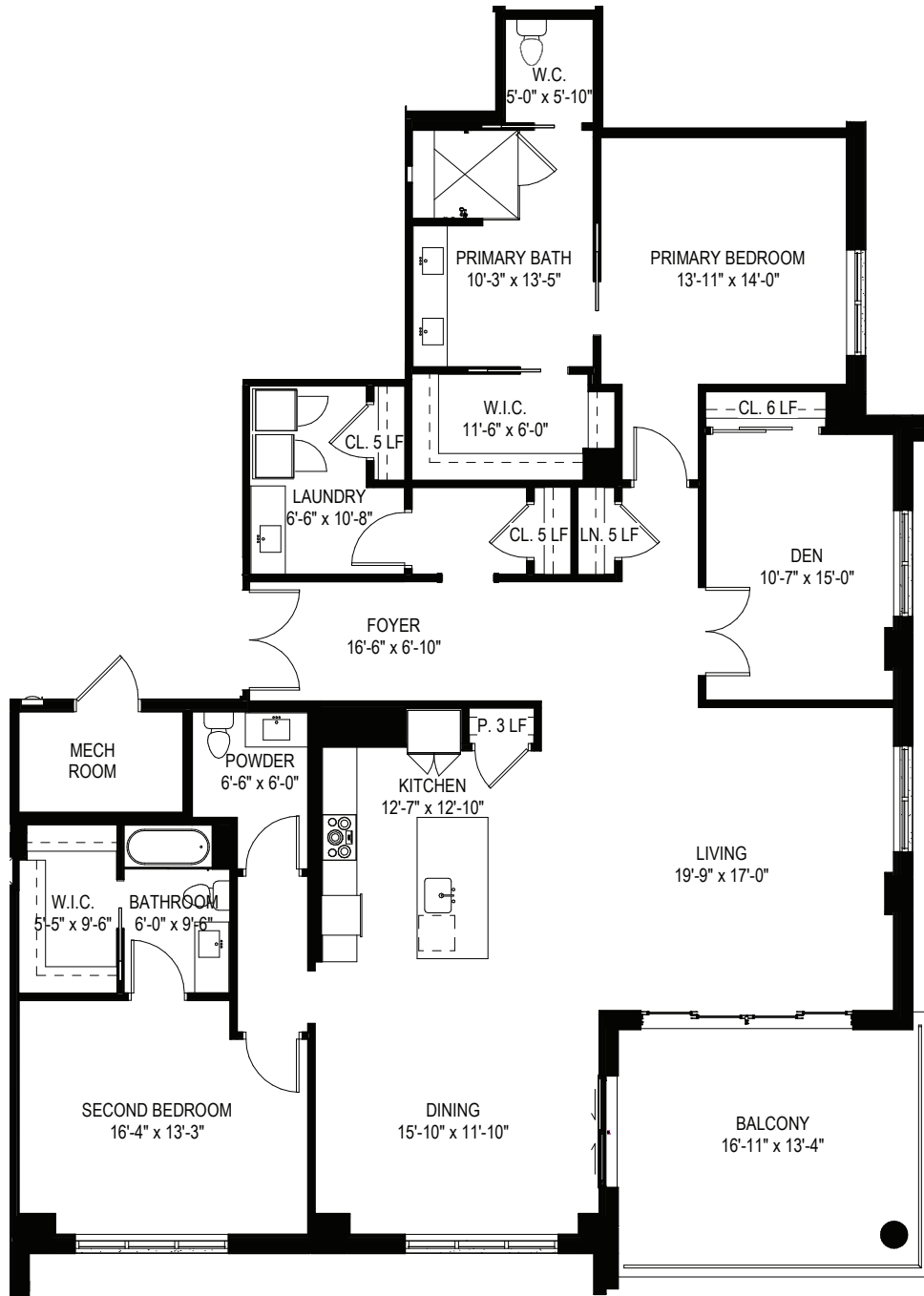
PENTHOUSE | 2BR + DEN + 2.5BA | 2,311 S.F. *under air*



FLOORPLAN

P2

Available on Floors 11 & 12

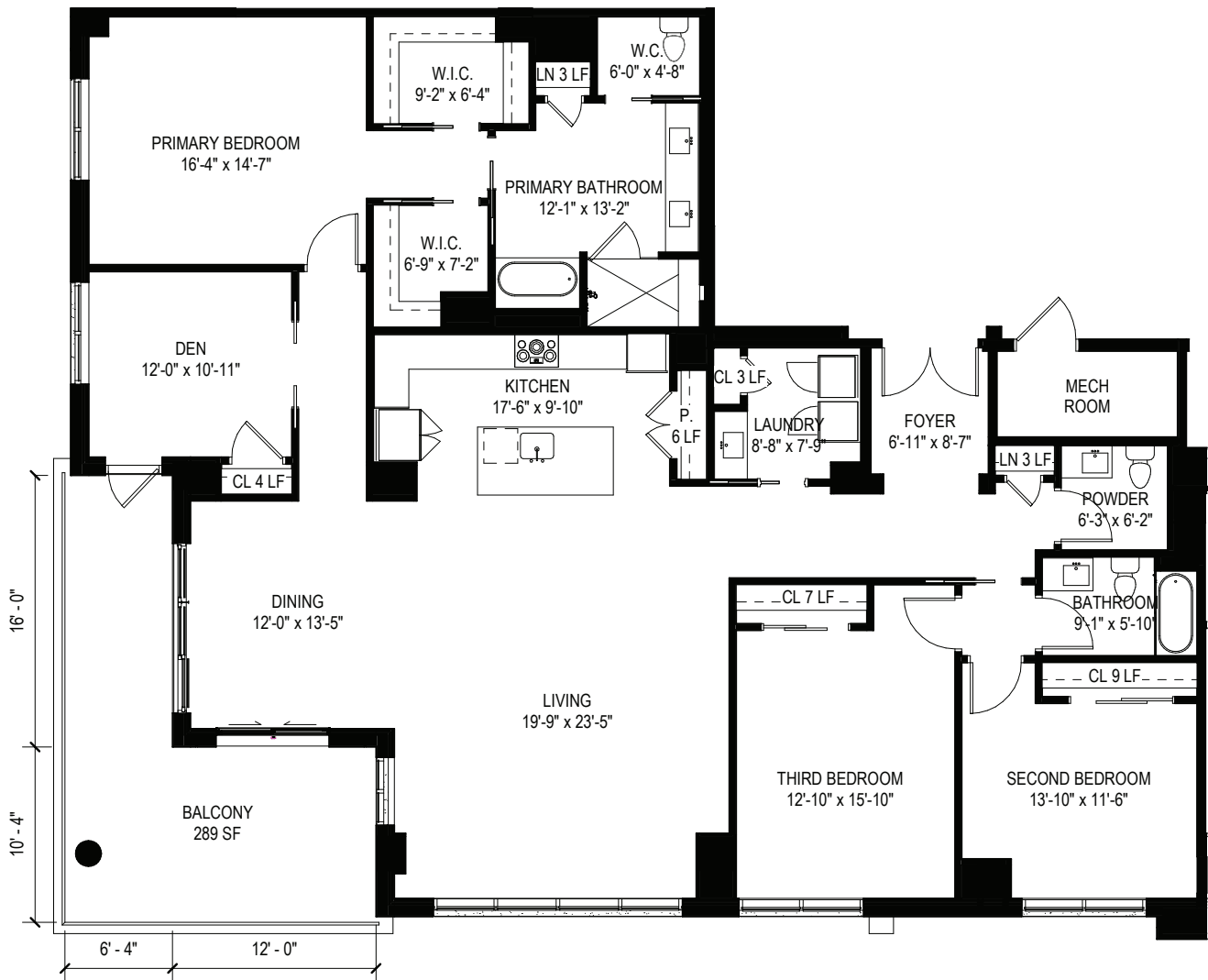
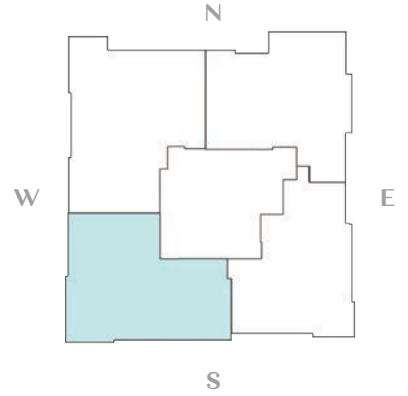


PENTHOUSE | 2BR + DEN + 2.5BA | 2,237 S.F. *under air*

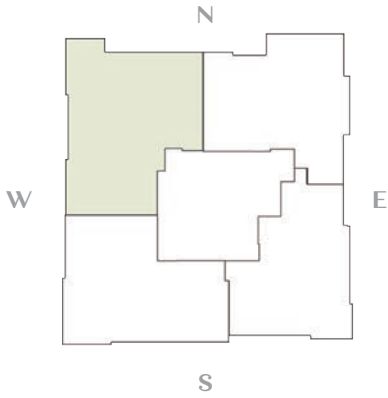
FLOORPLAN

P3

Available on Floors 11 & 12



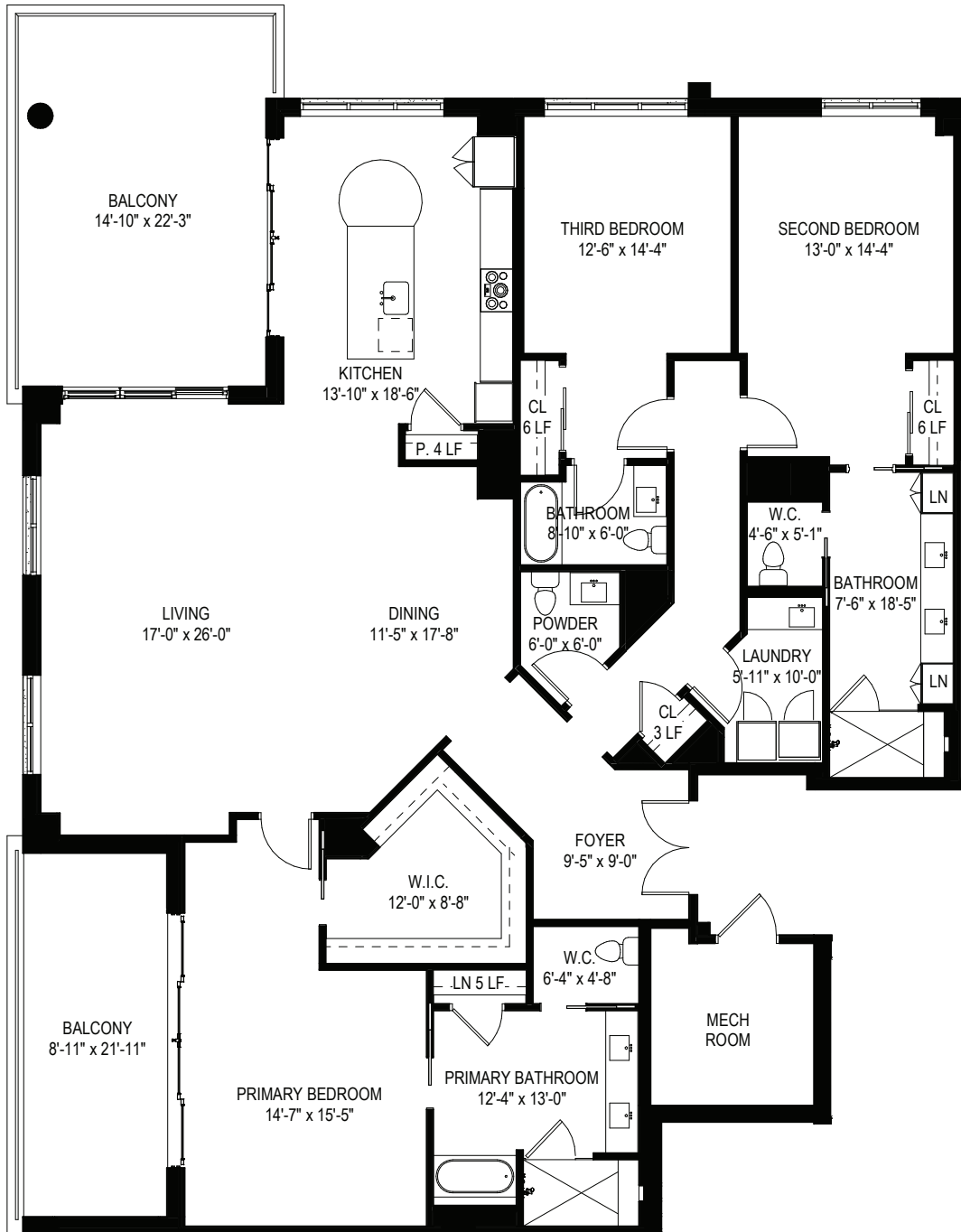
PENTHOUSE | **3BR + DEN + 2.5BA** | **2,462 S.F.** *under air*



FLOORPLAN

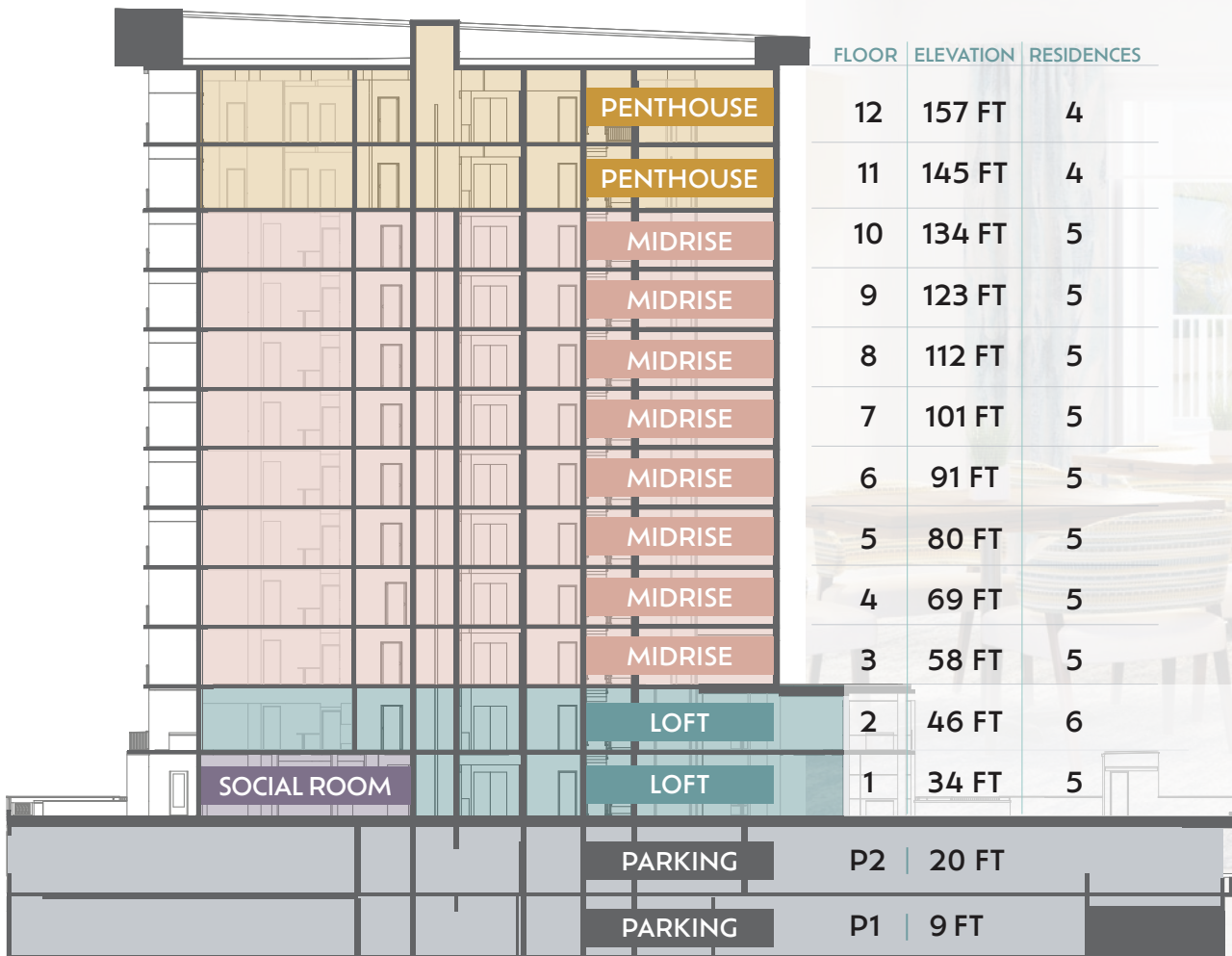
P4

Available on Floors 11 & 12



PENTHOUSE | 3BR + 3.5BA | 2,722 S.F. *under air*

VISTA CAY Building Detail









VISTA CAY



SHELL POINT RETIREMENT COMMUNITY

13921 Shell Point Plaza, Fort Myers, Florida 33908 | ShellPoint.org/VistaCay | (239) 466-1131 | 800-780-1131

Shell Point is located along the Caloosahatchee River in Fort Myers, just minutes from the islands of Sanibel and Captiva.

Shell Point is a nonprofit ministry of The Christian and Missionary Alliance Foundation, Inc. ©2023 Shell Point. All rights reserved. SLS-4794-23

All renderings, maps, site plans, photos, simulated views, floorplans and all other information herein are conceptual and should not be relied upon as representing the final detail. Dimensions, features, and specifications of the proposed development and residences are subject to change without notice. Furnishings are represented for illustration purposes only.